



Peterborough Safeguarding Children Board Newsletter

Message from Prity Patel,
Transitional Chair PSCB

Contents:

Message from Chair	page 1
The Learning Platform	page 3
Website Development	page 3
Goodbyes and Welcomes	page 4
BBC Child in Need Small Grants	page 4
The Protection of Children in Peterborough	page 5
National Safeguarding Delivery Unit (NSDU)	page 6
New Publications	page 6
Consultation	page 7
Young Runaways	page 7
Working Together Consultation	page 8
Safeguarding Standards	page 11
Validation of Safeguarding Training	page 11
Review of single agency Level 1 safeguarding training in Peterborough	page 12

Welcome to the first PSCB newsletter in the New Year!

At the PSCB we have a very challenging but exciting year ahead of us.

Since the PSCB Development Day in September 2009, the Board has been working with the Children's Trust developing a new governance model which will forge a strong collaboration between us and the interface between delivery and scrutiny of safeguarding services in our city. This model has been discussed at the PSCB and CT and has been fully endorsed as the way forward in achieving Lord Laming's recommendation 53 that

"Regular dialogue between the CT and the LSCB should demonstrate all functions of both the LSCB and CT are being effectively discharged" Laming: The Protection of Children in England: A Progress Report (March 2009).

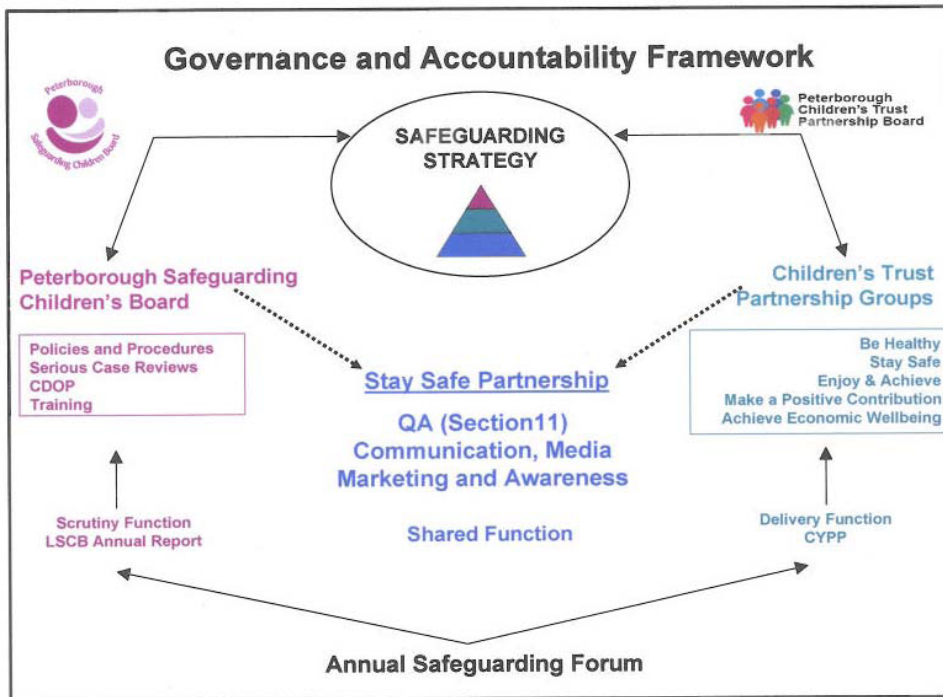
All partner agencies of the PSCB and CT fully recognise that by working to this model not only will the responsibility of improving outcomes for children, including staying safe, which has to be delivered by the CT be achieved but also enable the PSCB to be assured that multi-agency partners are co-operating to safeguard and promote the welfare of children and young people in Peterborough.

This will also mean that both entities will continue to fulfil their respective statutory functions, the PSCB of scrutiny and advisory and the CT of delivery and performance.

To facilitate and support this collaborative approach and meet statutory functions an overarching Safeguarding Strategy is to be developed, through the shared function group of the Stay Safe Partnership. This group has members from the PSCB and the CT who will ensure that the shared functions will be discharged. This will include **Quality Assurance** (National safeguarding indicators are a key source of evidence about local service performance. The CT will own the strategy to deliver targets and the PSCB will monitor the effectiveness of targets on performance to safeguard children. The Stay Safe Partnership will deliver a Quality Assurance framework to measure practice, procedures, capability and outcomes). **S.11 compliance** (function of monitoring partner's discharge of responsibilities will be incorporated into the Stay Safe Partnership group.) Developing a **Communication Strategy** in promoting public and professional awareness of local safeguarding issues and **marketing** these issues positively.

I am very pleased to inform you that not only do we have the support and commitment of all partners, but also of our local Members who welcomed the model at a recent sub-committee.

As you can see although we have made tremendous progress, we still have work to do. However, if we all continue to work together then the Board's vision of completing our **Journey to Safeguarding Excellence** in improving safeguarding for children and young people in Peterborough will make the journey a more successful one.



Consultation

Children's Trusts Statutory Guidance on co-operation arrangements including the Children's Trust Board and the Children and Young People's Plan.

This new guidance is largely, and the regulations wholly, underpinned by changes introduced by the Apprenticeship, Skills, Children and Learning Act 2009 (ASCL Act 2009)

What has changed?

This guidance reflects the changes arising from the ASCL Act 2009

- The Children's Trust Board will be placed on a statutory footing from April 2010.
- Responsibility for developing, publishing and reviewing the CYPP passes from the local authority alone to the Children's Trust Board. The first new style CYPP must be published by April 2011.
- The CYPP becomes a joint strategy in which the Children's Trust partners set out how they will co-operate to improve the well-being of children and young people in the local area. It differs from the previous CYPP in that although the scope of the new CYPP includes all services that affect children and young people's well-being, once the Children's Trust Board has identified its main cross-cutting priorities, the Plan should focus on what the partners will do together to deliver them.
- Responsibility for implementing the CYPP remains with the individual partners, who are under a duty to have regard to the Plan. The Children's Trust Board is responsible for monitoring the extent to which the partners act in accordance with the Plan and to publish an annual report which sets this out.
- Schools (including Academies, non maintained special schools and Short Stay Schools/Pupil Referral Units), FE and sixth-form colleges and Jobcentre Plus will become new statutory 'relevant partners' in the Children's Trust co-operation arrangements from January 2010. This means that like other statutory 'relevant partners' they:
 - will be required to co-operate with the local authority and its other partners to improve children's well-being through the Children's Trust;
 - will (subject to any specific restrictions on partners' funding arrangements) be able to pool budgets and share other resources with the other partners;
 - and
 - must be represented on the Children's Trust Board

Young Runaways

Our working group has almost completed the local practice guidance "Children missing from home and care". Once this has been signed off it will be added to our procedures and an e-mail alert will be sent.

